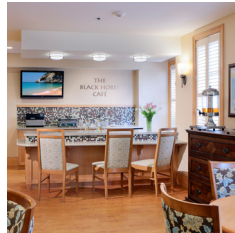




Warren Patterson Photography©

LEVI + WONG DESIGN ASSOCIATES INC | LEVI + WONG DESIGN ASSOCIATES INC | LEVI + WONG DESIGN ASSOCIATES INC | LEVI + WONG DESIGN ASSOCIATES INC



Senior Living & Care Design Services

- Long Term Care
- Skilled Nursing
- Assisted Living
- Independent Living
- Respite Care
- Dementia Assisted Living
- Dementia Skilled Nursing

- Hospice
- Hospice Care Skilled Nursing Facility
- Subacute Rehabilitation
- Inpatient Rehabilitation Hospital
- Social Day Care
- Outpatient Therapy
- Therapeutic Landscapes

Partial List of Clients

- Five Star Quality Care
- Hebrew Senior Life
- Golden Living Centers
- Care One/Healthbridge (MA)
- Geriatric Authority of Holyoke
- Edgewood Retirement Community
- Kindred Healthcare

- Dodge Park
- Rogerson Communities
- Epoch Assisted Living
- Geer, Inc.
- Geriatric Authority of Milford
- D'Youville Senior Care
- Sunbridge Healthcare

- Briarwood Communities
- Welch Healthcare
- Mary Ann Morse Nursing & Rehab Ctr
- Braintree Rehabilitation Hospital
- New England Rehabilitation Hospital



Thomas C. Levi, AIA
Managing Principal

Senior Environments,
Rehabilitation, and Healthcare
Studios



**Willie W. Wong, AIA,
ASLA, LEED AP BD+C**
Principal

Senior Environments and
Landscape Studios



Ruth Neeman, AIA
Principal

Senior Environments Studio



**Neal K. Emmer, AIA,
LEED Green Associate**
Principal

Healthcare Studio



**Mary O'Looney, IIDA,
EDAC, LEED AP BD+C**
Senior Associate

Interior Design Studio

Levi + Wong Design offers architecture, interior design, landscape architecture, and planning services for senior living, senior care, healthcare, rehabilitation, and corporate clients. We are a passionate, client-centric group who believe that design can improve the quality of life in the communities where we work and live. Quality Design, Service, Innovation, Collaboration, and Sound Business are the foundations of our success.

As a full-service design firm, we each bring specialized skills and knowledge to the firm's collaborative design style. Our modest size--around 30 employees-- belies the depth and breadth of the service we offer in planning, design, and project management. Our experienced working principals, collaborative style, proactive approach and interactive Client / Architect Virtual Design Process allows us to creatively and innovatively design projects that respond to client needs. Foremost to our clients we are **Visionaries, Advisors, Designers, and Managers.**

Senior Care + Rehabilitation Studio
Over the last 30 years, Levi + Wong Design has completed hundreds of projects throughout New England and beyond. Our designs are hallmarked by thoughtful responsiveness to end-user needs, and are appropriate to each space's context. By offering more than architectural services, Levi + Wong Design seamlessly integrates the entire project into a cohesive whole.

Our extensive knowledge of senior environments, rehabilitative healthcare, and accessibility ensures our designs work for all physical ability levels. Senior Environments Design Studio Director Ruth Neeman, along with Levi + Wong Design Rehabilitation Design Studio Director Thomas Levi create supportive, safe, and socially meaningful environments in retirement housing, assisted living, adult daycare, Alzheimer suites, and long term care facilities. Our practice focuses on creating non-"institutional", resident centered, and welcoming spaces.

DESIGN SERVICES

- Architecture
- Interior Design
- Landscape Architecture
- Urban Design

PLANNING SERVICES

- Feasibility Studies
- Medical Planning
- Master Site Planning
- Land Use Studies
- Zoning
- Regional and Community Planning

SPECIAL SERVICES

- Programming
- Existing Facilities Review
- Strategic Project Planning
- Code Review and Assessment
- Accessibility Analysis
- 3D Computer Graphics
- Graphic Design
- Project Management



Warren Jagger ©

LEVI + WONG DESIGN ASSOCIATES INC | LEVI + WONG DESIGN ASSOCIATES INC | LEVI + WONG DESIGN ASSOCIATES INC | LEVI + WONG DESIGN ASSOCIATES INC

SENIOR LIVING & CARE DESIGN

